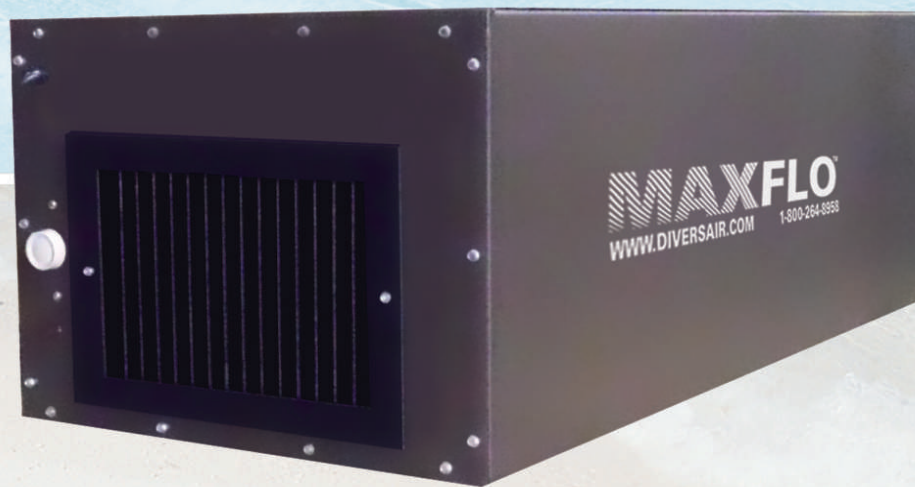


DIVERSIFIED AIR SYSTEMS, INC.

MAXFLO D-11 TM **series**

Industrial Air Cleaners

- *Economical way to improve air quality 65% to 85%*
- *Helps meet or exceed OSHA standards*
- *Recirculates clean air, eliminating the need for expensive make-up air*
- *Low noise level, direct drive blower*



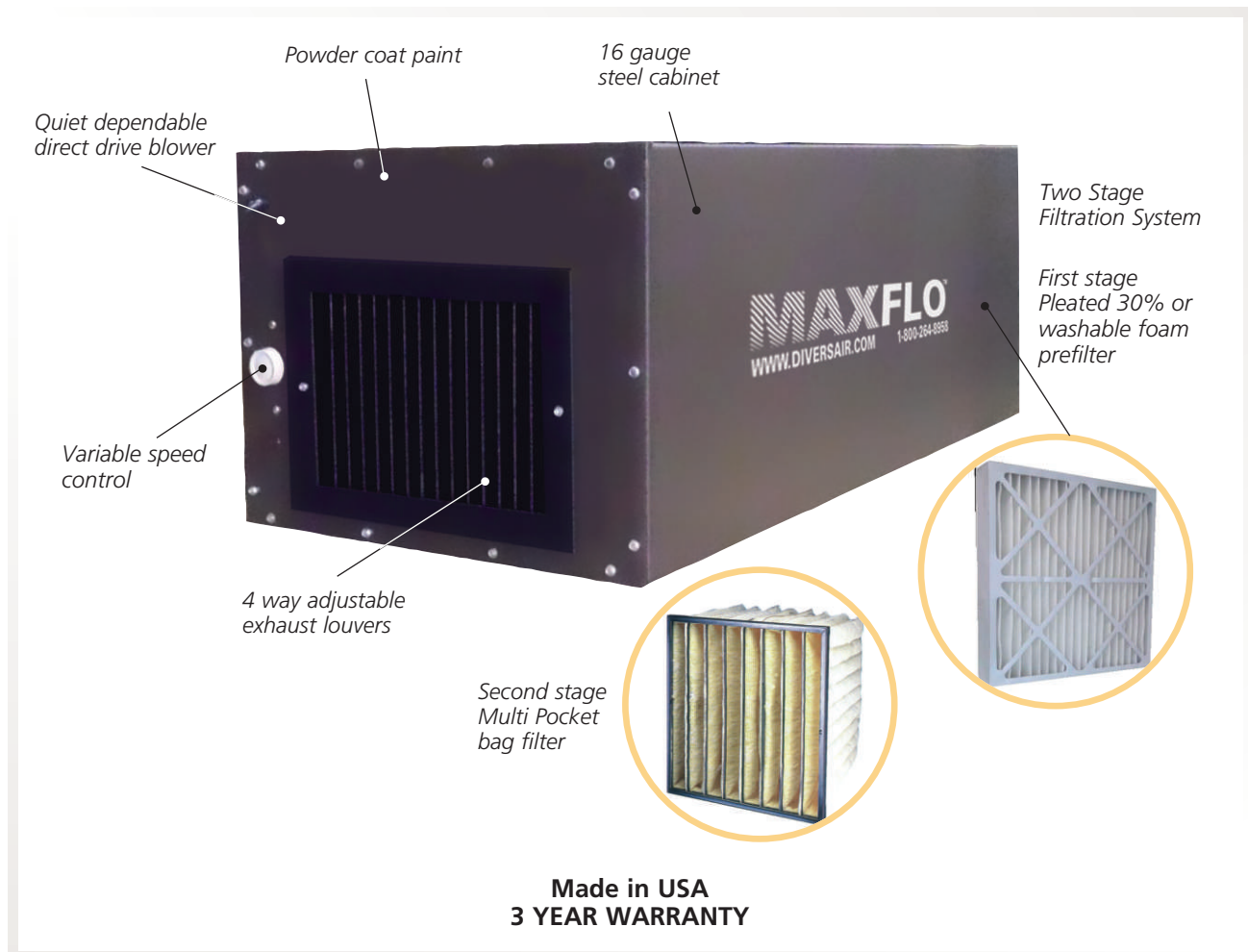
- *Variable speed control*
- *Reduces house keeping costs and improves productivity*
- *Minimal installation required, ceiling or side wall mounted*
- *Ships fully assembled, 1100 CFM*

Superior technology generating substantial operating savings

TYPICAL APPLICATIONS FOR THE MAXFLO AMBIENT AIR CLEANERS

- Smoke
- Dust
- Powders
- Odors, etc...

OUTSTANDING MAXFLO D SERIES FEATURES

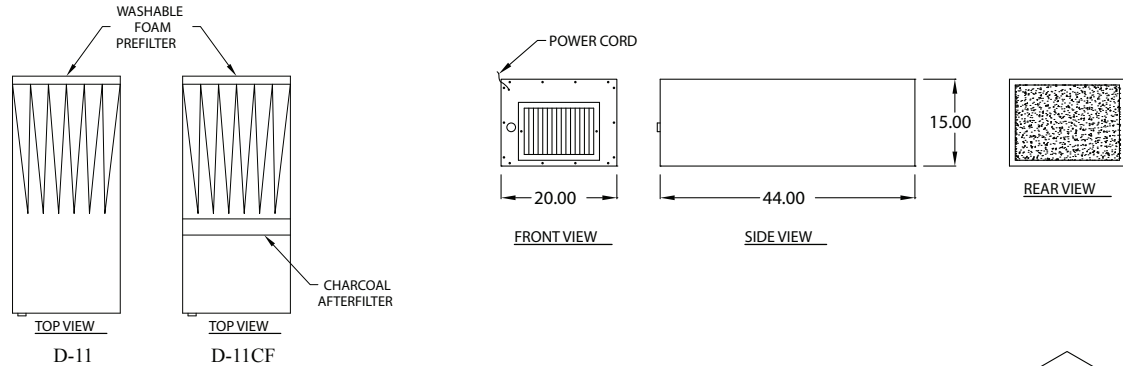


Ideal for automotive industry, welding shops, vocational schools, training facilities, laboratories, wood working shops, metal transforming industries, batching and powder processes.

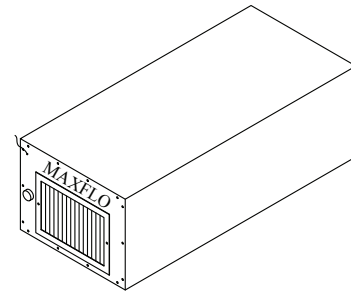
Call today: 800-264-8958

MAXFLO D-11 SERIES SPECIFICATIONS

16 GAUGE STEEL CABINET FINISHED WITH A CHOCOLATE BROWN CHEMICAL RESISTANT POLYURETHANE PAINT, FOUR WAY INDIVIDUALLY ADJUSTABLE BLADES AND A VARIABLE SPEED, DIRECT DRIVE MOTOR WITH POWER CORD.

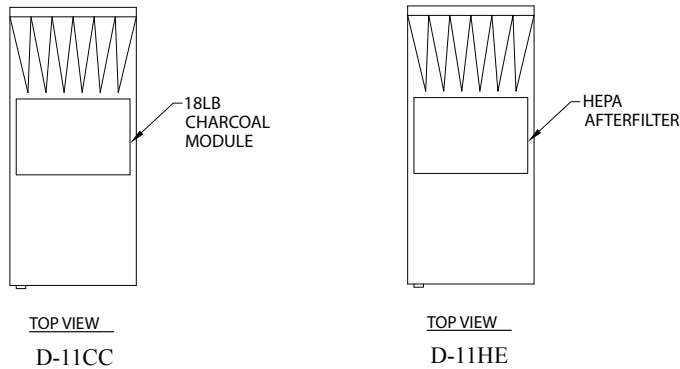


SPECIFICATIONS			
AIRFLOW:	1100 CFM (Max)	PREFILTERS:	(1) 1" Washable mesh, Std. (1) Pleated fiber, Opt. (1) Aluminum mesh, Opt.
ELECTRICAL:	1/5 HP 115/60/1, 3.5 Amps Direct drive blower	MAIN FILTERS: (Depends on model)	(1) 24" 6 pocket 95% (1) 12" 6 pocket 95%
WARRANTY:	3 Years on all parts except filters	AFTER FILTERS (Depends on model.)	(1) 2" charcoal, (1) 12" 99.97 HEPA
NOISE:			62 dBA
OPTIONS:	Filter change gauge, Silencer, Mounting bracket, Eyebolts, HEPA, charcoal module.		



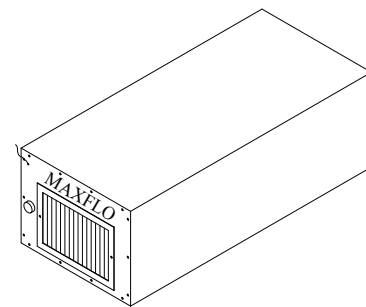
D-11 / D-11CF

MAXFLO D-11 SERIES OPTIONAL MULTIPLE CABINET CONFIGURATION

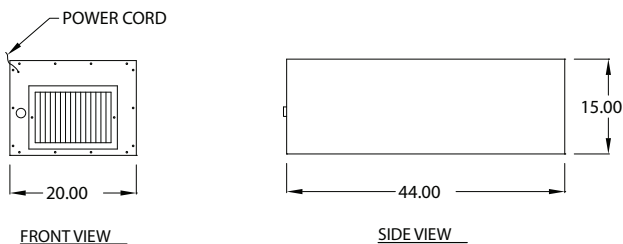


TOP VIEW
D-11CC

TOP VIEW
D-11HE



D-11CC / D-11HE



FRONT VIEW

SIDE VIEW

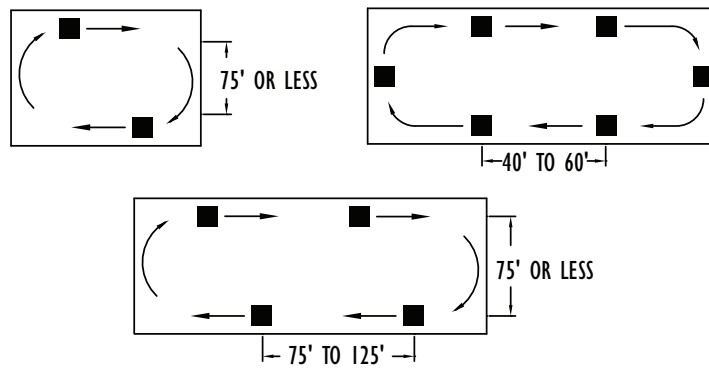
REAR VIEW

Call today: 800-264-8958

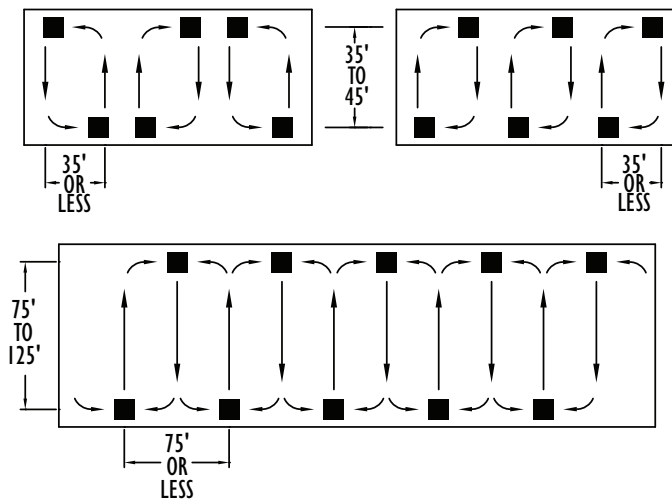
FREE HANGING UNDUCTED AIR CLEANING SYSTEMS

Unducted air cleaning systems consist of one or more interior air cleaners positioned in the overhead plant space to create a planned air circulation airflow pattern. This method effectively cleans the overall ambient air. Unducted systems rely on constant cleaning and mixing of the entire area volume to remove contaminants. Unducted systems never remove 100% of the contaminants. The objective of this method is to achieve a substantial contaminant reduction at steady-state levels. Unducted systems will typically provide an estimated 65 to 85% contaminant reduction. The percentage reduction is based on the number of air changes provided by the unducted air cleaning system.

Recommended Air Flow Patterns



CIRCULAR AIR PATTERNS



CROSS-BAY PATTERNS