

# MAXFLO™

## Head Office

10801 Electron Drive  
Louisville, KY 40299

Tel. : 502.267.0333  
Toll Free : 1.800.264.8958  
Fax : 502.267.4241

---

[info@diversair.com](mailto:info@diversair.com)  
[www.diversair.com](http://www.diversair.com)

# MAXFLO™

## FABRIC BAGHOUSE DUST COLLECTORS



FABRIC BAGHOUSE DUST COLLECTORS





3/4" @ 1 1/2"  
Goyen Valves

Certified Compressed  
Air Tank

12 Gauge Construction

Fast Acting Access Door

B-band Baghouse System

8' & 10' Baghouse Length

Service Ladder  
and Platform

Lifting Lugs

Belt Drive Blowers

Dirty Side Pressure  
Differential Line Filter

Full Logic (cleaning)  
Control Board

Goyen Solenoid Block Kit

Hopper with minimum  
slope of 60 degrees

## FEATURES & BENEFITS

1

## VERTICAL FILTRATION PRINCIPLE

3

## FILTRATION TECHNOLOGY

5

## ACCESSORIES

7

## ENERGY EFFICIENCY

9

## MAINTENANCE ACCESS

11

## SPECIFICATIONS

13

## DISCOVER THE POWER OF BAGHOUSE DUST COLLECTORS

Baghouse dust collectors stand out due to their ability to handle high volumes of dust laden air using a compressed-air self-cleaning system enabling effective reverse blasting through deformation of the filter bags.

The unit filters sub-micron sized particles in continuous operating mode and without a steady loss of differential pressure.

Our line of baghouse dust collectors includes sealed mechanisms as well as doors that provide easy access with very few tools required for maintenance.

## MAIN ADVANTAGES AT A GLANCE

### High filtration capacity

Models from 16 to 720 filter bags and up to 125 000 CFM capacity.

### Custom engineering

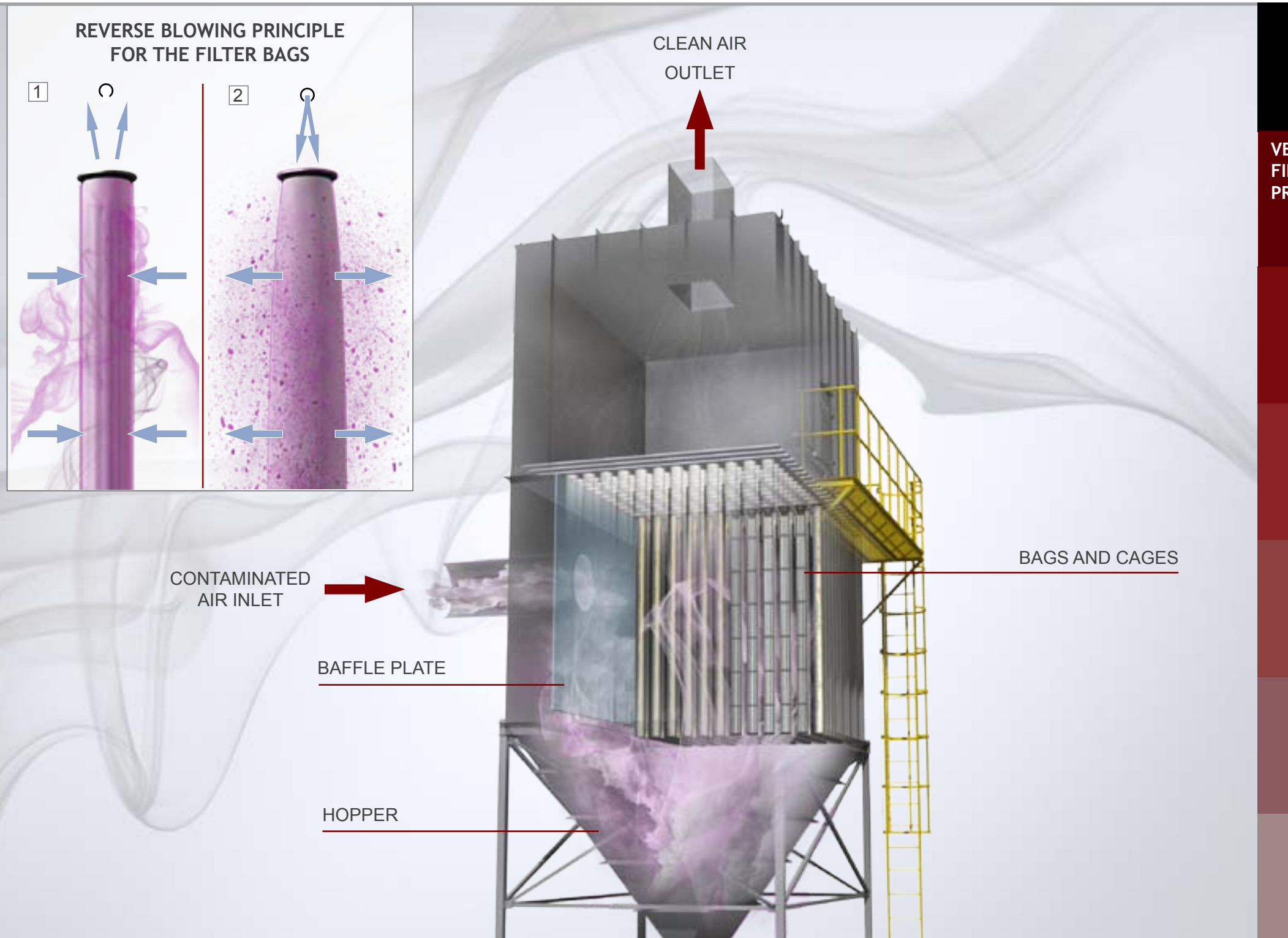
The systems in the MAXFLO series can be customized based on specific requirements.

### Project integration

Avoids particle accumulation within plants, in order to better comply with NFPA regulations.

### Standard filter bags

Not limited to obtaining replacement cages and bags from a sole source provider.



**VERTICAL  
FILTRATION  
PRINCIPLE**

3

**HOW THE MAXFLO SERIES DUST COLLECTOR WORKS**

Dust-laden air enters and is directed to the bottom of the dust collector by means of a deflector plate prior to going through the filter bags.

The dust accumulates creating a cake on the outside surface of the bags. At regular intervals, a burst of compressed air is injected into the bags through a parabolic nozzle that creates a shock wave causing the particles to fall to the bottom of the hopper.

The filtered air exits through the venturis into the clean section and is then either expelled outside or recirculated, depending on the application.

**ADVANTAGES**

**Fast, simple and safe bag replacement**

**Inside-access models:** It is possible to replace the bags with just a screwdriver.

**Top-access model:** The “B”-shaped belt technology requires no tools to replace the bags.

**Continuous operation**

Unlike the shaker models, it is not necessary to shut down this type of dust collector to clean the filters.

**Economical**

The baghouse dust collector is an economical choice because it requires minimal maintenance: only periodic bag replacement is necessary.

- 1 The dust-laden air is filtered and forms a dust cake on the outside surface of the bag.
- 2 The pulsed air blast causes the bag to expand, which ejects the accumulated dust cake into the hopper.





**WE HAVE THE FILTERING MEDIUM THAT MATCHES YOUR NEEDS**

Maximum separation performance is made possible by using high quality materials for the filtering fabrics. Our line of natural and synthetic felts enables us to customize the collector to the needs of each facility.

To ensure complete sealing for any type of dust, the filter bags are generally designed to be installed and held firmly in place by either a B-shaped belt, flat belt, cord, double cord or ring. A broad range of treatments and coatings can be applied to either side of the bags to facilitate reverse blasting, increase effectiveness, and extend service life.

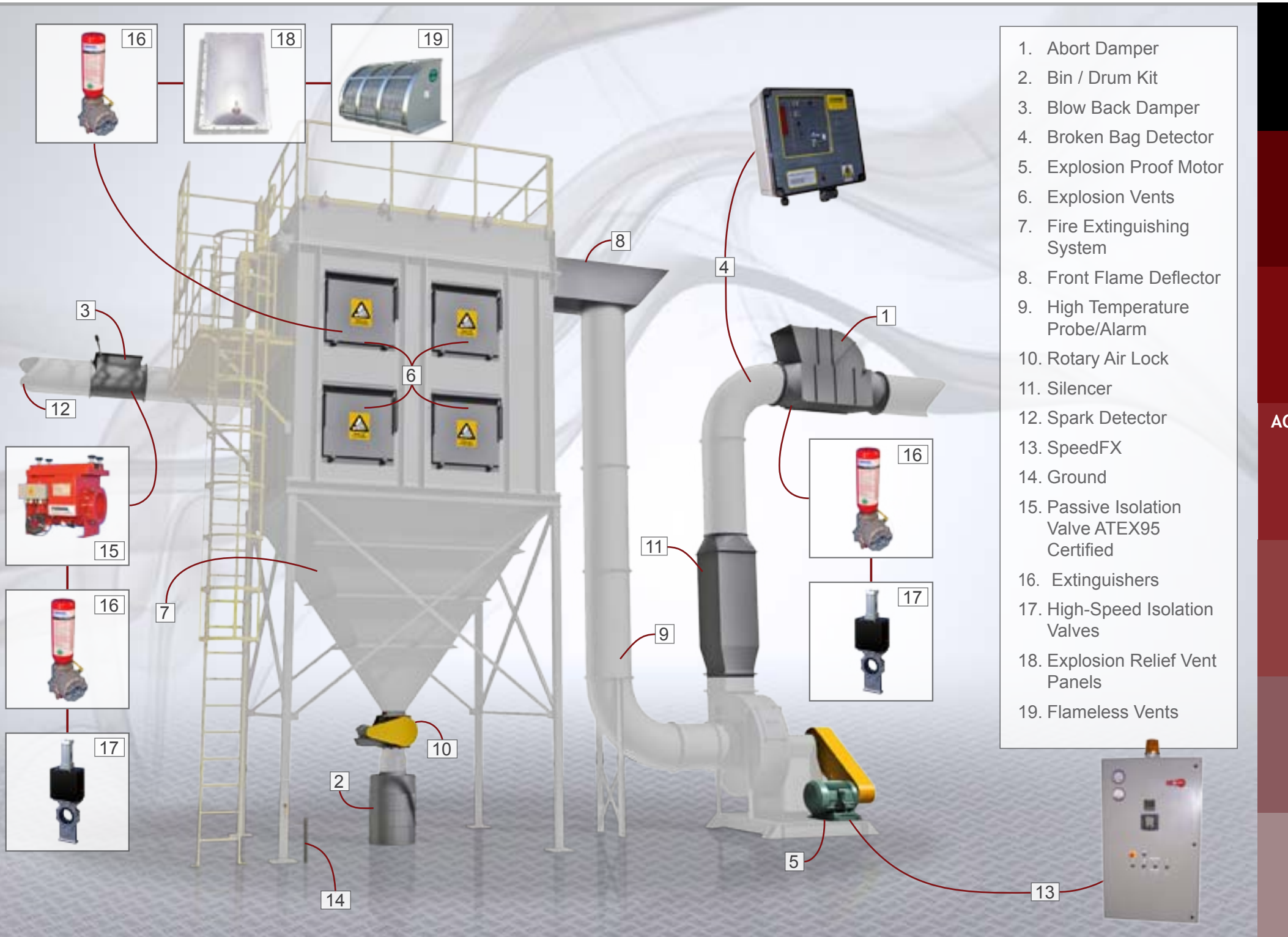
**FILTRATION TECHNOLOGY**

5

Generic name	Felt							Woven
	Polyester	Polypropylene	Meta-aramid	Polyphenylene Sulphide	Co-polyimide, Polymer	Acrylic (Co-polymer)	PTFE (fluorocarbene)	Fiberglass
Trade name	Terylene, Dacron, Trevira, Fortel	Meraklon, Courlene	Nomex, Conex	Ryton	P-84	Acrilan, Orlon, Dralon T	Teflon, Goretex, Tefaire, Rastex	Huyglass
Colour	White	White	Cream	Light Brown	Gold	Cream	Dark Brown	Variable
Tenacity (CN/TEX)	60	50	33	35	25	20	18	70-120
Specific Density (g/cm <sup>3</sup> ) / (lbs/ft <sup>3</sup> )	1.38 / 86.15	0.91 / 56.81	1.38 / 86.15	1.37 / 85.53	1.41 / 88.02	1.15 / 71.79	2.3 / 43.58	2.5 / 156.07
(continuous) Operating temperature C° / F°	135 / 275	100 / 200	204 / 400	190 / 375	260 / 500	120 / 260	260 / 500	260 / 500
Permeability (ft <sup>3</sup> /min/ft <sup>2</sup> ) / (m <sup>3</sup> /h/m <sup>2</sup> )	25-35 / 453-635	25-35 / 453-635	25-35 / 453-635	25-35 / 453-635	25-35 / 453-635	25-35 / 453-635	7-20 / 127-363	15-30 / 272-544
Cost (\$/m <sup>2</sup> ) / (\$/ft <sup>2</sup> )	10.75 / 1.00	15.05 / 1.40	30.15 / 2.80	35.50 / 3.30	73.20 / 6.80	14.85 / 1.38	147.50 / 13.70	53.80 / 5.00
General Strength								
Pressure during reverse blasting	****	***	**	****	****	**	*	***
Moisture	**	*	***	****	****	****	****	****
Combustion	yes	yes	no	no	no	yes	no	no
Acid	***	****	**	***	***	*	****	***
Alkalis	*	****	**	**	**	*	****	*
Abrasion	****	****	***	**	*	***	**	*
Solvent	***	****	**	***	****	**	****	****
Oxidising agents	****	***	**	*	**	*	****	****
Hydrolysis	*	****	**	***	**	***	****	****

**THINGS TO CONSIDER WHEN CHOOSING THE FILTERING MEDIUM**

- substance
- shape
- particle size
- humidity level in the air
- load
- temperature



1. Abort Damper
2. Bin / Drum Kit
3. Blow Back Damper
4. Broken Bag Detector
5. Explosion Proof Motor
6. Explosion Vents
7. Fire Extinguishing System
8. Front Flame Deflector
9. High Temperature Probe/Alarm
10. Rotary Air Lock
11. Silencer
12. Spark Detector
13. SpeedFX
14. Ground
15. Passive Isolation Valve ATEX95 Certified
16. Extinguishers
17. High-Speed Isolation Valves
18. Explosion Relief Vent Panels
19. Flameless Vents

## ACCESSORIES

### ENHANCE YOUR SECURITY AND PERFORMANCE

Some options like the SpeedFX™ can vary motor speed and energy consumption thus improving efficiency.

A number of Airex accessories aim to meet NFPA regulations, preventing against fire and explosions while better protecting workers and facilities.

### FIRE PROTECTION ACCESSORIES

**Abort Damper**  
Connected with a proper spark or fire detection system, the abort damper redirects exhaust air into the atmosphere as soon as a spark is detected.




**Blow Back Damper**  
Damper ensure there is a seal, if a fire or explosion occurs in the dust collector, preventing the return of smoke and fire to the shop via the intake ductwork.

**Explosion Vents**  
The explosion vents redirects a propagating flame or explosion to atmosphere. Pressure rated washers are used to seal and release vent.

**Rotary Air Lock**  
Designed to control the flow of discharge material from a dust collector or other type of process while maintaining an air seal.

**Spark Detection & Fire Extinguishing Kit System**  
System counters the spread of fire with a temperature probe and sprinkler, spraying the collector and stopping the blower (eliminating oxygen intake once a set point is reached).



SHAKER UNIT	CYCLONIC EFFECT UNIT	RECTANGULAR UNIT																																																																		
																																																																				
<table border="1"> <thead> <tr> <th colspan="2">COSTS</th> </tr> </thead> <tbody> <tr> <td>Acquisition</td> <td>\$</td> </tr> <tr> <td>Maintenance</td> <td>\$\$</td> </tr> <tr> <td>Energy Consumption</td> <td>\$\$\$</td> </tr> <tr> <td>Filters Replacement Frequency</td> <td>\$\$\$</td> </tr> <tr> <td>Static Pressure</td> <td>\$\$\$</td> </tr> <tr> <th colspan="2">OTHER CHARACTERISTICS</th> </tr> <tr> <td>Variable Volume</td> <td>••</td> </tr> <tr> <td>Filtration Capacity</td> <td>•</td> </tr> <tr> <td>Continuous Use</td> <td>no</td> </tr> <tr> <td>Compressed Air</td> <td>no</td> </tr> </tbody> </table>	COSTS		Acquisition	\$	Maintenance	\$\$	Energy Consumption	\$\$\$	Filters Replacement Frequency	\$\$\$	Static Pressure	\$\$\$	OTHER CHARACTERISTICS		Variable Volume	••	Filtration Capacity	•	Continuous Use	no	Compressed Air	no	<table border="1"> <thead> <tr> <th colspan="2">COSTS</th> </tr> </thead> <tbody> <tr> <td>Acquisition</td> <td>\$\$\$</td> </tr> <tr> <td>Maintenance</td> <td>\$</td> </tr> <tr> <td>Energy Consumption</td> <td>\$\$\$</td> </tr> <tr> <td>Filters Replacement Frequency</td> <td>\$\$</td> </tr> <tr> <td>Static Pressure</td> <td>\$\$\$</td> </tr> <tr> <th colspan="2">OTHER CHARACTERISTICS</th> </tr> <tr> <td>Variable Volume</td> <td>•</td> </tr> <tr> <td>Filtration Capacity</td> <td>•••</td> </tr> <tr> <td>Continuous Use</td> <td>yes</td> </tr> <tr> <td>Compressed Air</td> <td>yes</td> </tr> </tbody> </table>	COSTS		Acquisition	\$\$\$	Maintenance	\$	Energy Consumption	\$\$\$	Filters Replacement Frequency	\$\$	Static Pressure	\$\$\$	OTHER CHARACTERISTICS		Variable Volume	•	Filtration Capacity	•••	Continuous Use	yes	Compressed Air	yes	<table border="1"> <thead> <tr> <th colspan="2">COSTS</th> </tr> </thead> <tbody> <tr> <td>Acquisition</td> <td>\$\$</td> </tr> <tr> <td>Maintenance</td> <td>\$</td> </tr> <tr> <td>Energy Consumption</td> <td>\$</td> </tr> <tr> <td>Filters Replacement Frequency</td> <td>\$</td> </tr> <tr> <td>Static Pressure</td> <td>\$</td> </tr> <tr> <th colspan="2">OTHER CHARACTERISTICS</th> </tr> <tr> <td>Variable Volume</td> <td>•••</td> </tr> <tr> <td>Filtration Capacity</td> <td>•••</td> </tr> <tr> <td>Continuous Use</td> <td>yes</td> </tr> <tr> <td>Compressed Air</td> <td>yes</td> </tr> </tbody> </table>	COSTS		Acquisition	\$\$	Maintenance	\$	Energy Consumption	\$	Filters Replacement Frequency	\$	Static Pressure	\$	OTHER CHARACTERISTICS		Variable Volume	•••	Filtration Capacity	•••	Continuous Use	yes	Compressed Air	yes
COSTS																																																																				
Acquisition	\$																																																																			
Maintenance	\$\$																																																																			
Energy Consumption	\$\$\$																																																																			
Filters Replacement Frequency	\$\$\$																																																																			
Static Pressure	\$\$\$																																																																			
OTHER CHARACTERISTICS																																																																				
Variable Volume	••																																																																			
Filtration Capacity	•																																																																			
Continuous Use	no																																																																			
Compressed Air	no																																																																			
COSTS																																																																				
Acquisition	\$\$\$																																																																			
Maintenance	\$																																																																			
Energy Consumption	\$\$\$																																																																			
Filters Replacement Frequency	\$\$																																																																			
Static Pressure	\$\$\$																																																																			
OTHER CHARACTERISTICS																																																																				
Variable Volume	•																																																																			
Filtration Capacity	•••																																																																			
Continuous Use	yes																																																																			
Compressed Air	yes																																																																			
COSTS																																																																				
Acquisition	\$\$																																																																			
Maintenance	\$																																																																			
Energy Consumption	\$																																																																			
Filters Replacement Frequency	\$																																																																			
Static Pressure	\$																																																																			
OTHER CHARACTERISTICS																																																																				
Variable Volume	•••																																																																			
Filtration Capacity	•••																																																																			
Continuous Use	yes																																																																			
Compressed Air	yes																																																																			
<p><b>DISTINCTIVE FEATURES:</b></p> <ul style="list-style-type: none"> <li>• Off line cleaning</li> <li>• Preferable to operate the dust collector at a low filtration ratio.</li> <li>• Ideal for occasional or intermittent use.</li> </ul>	<p><b>DISTINCTIVE FEATURES:</b></p> <ul style="list-style-type: none"> <li>• On / off line cleaning</li> <li>• This design requires more overhead space.</li> <li>• Heavy energy consumption due to the high static pressure of the cyclonic effect.</li> </ul>	<p><b>DISTINCTIVE FEATURES:</b></p> <ul style="list-style-type: none"> <li>• On / off line cleaning</li> <li>• Choice of efficient and low energy consuming blower, due to low pressure loss.</li> <li>• This design requires less overhead space.</li> </ul>																																																																		

ENERGY EFFICIENCY  
9

**THE PERFECT BALANCE BETWEEN EFFECTIVENESS AND COST**

More than one kind of dust collector uses filter bags. This does not mean that they are all just as effective for the same application. There are no bad dust collectors, just bad decisions during analysis and selection.

The Bagsonix series is a rectangular unit. Best used for high volume continuous filtration. Adding a variable frequency drive helps reduce size, selection and operating costs.

**THE DIFFERENT BAGHOUSE DUST COLLECTORS**

**Shaker Unit**  
This unit is far from being the preferred option if you are looking for continuous and efficient operation for industrial use.

**Cyclonic Effect Unit**  
This type of dust collector uses the cyclonic effect to separate out the larger particles and then trap the fine particles using filter bags.

**Rectangular Unit**  
This model provides a multitude of potential customizations to suit the client's requirements. It ranks among the most effective due to its balance between filtration capacity and the energy needed for proper operation.



MAINTENANCE ACCESS

11

### DIFFERENT MAINTENANCE ACCESS OPTIONS

The main selection criterion that determines which dust collector to choose is available overhead space.

The MAXFLO series offers three models that are differentiated by the location of the maintenance access.

### FEATURES OF THE MODELS

**W&S model: dirty side access**

This model is the most compact, which is ideal for locations where overhead space is limited. Its great disadvantage, as the name implies, comes from the fact that maintenance must be done inside the dirty section of the dust collector.

**TR model: clean side access with no plenum**

Replacing the bags is very easy because it does not require any tools, thereby increasing maintenance speed.

Clean side access requires additional overhead clearance of roughly 2m - 2,5m (6' - 8').

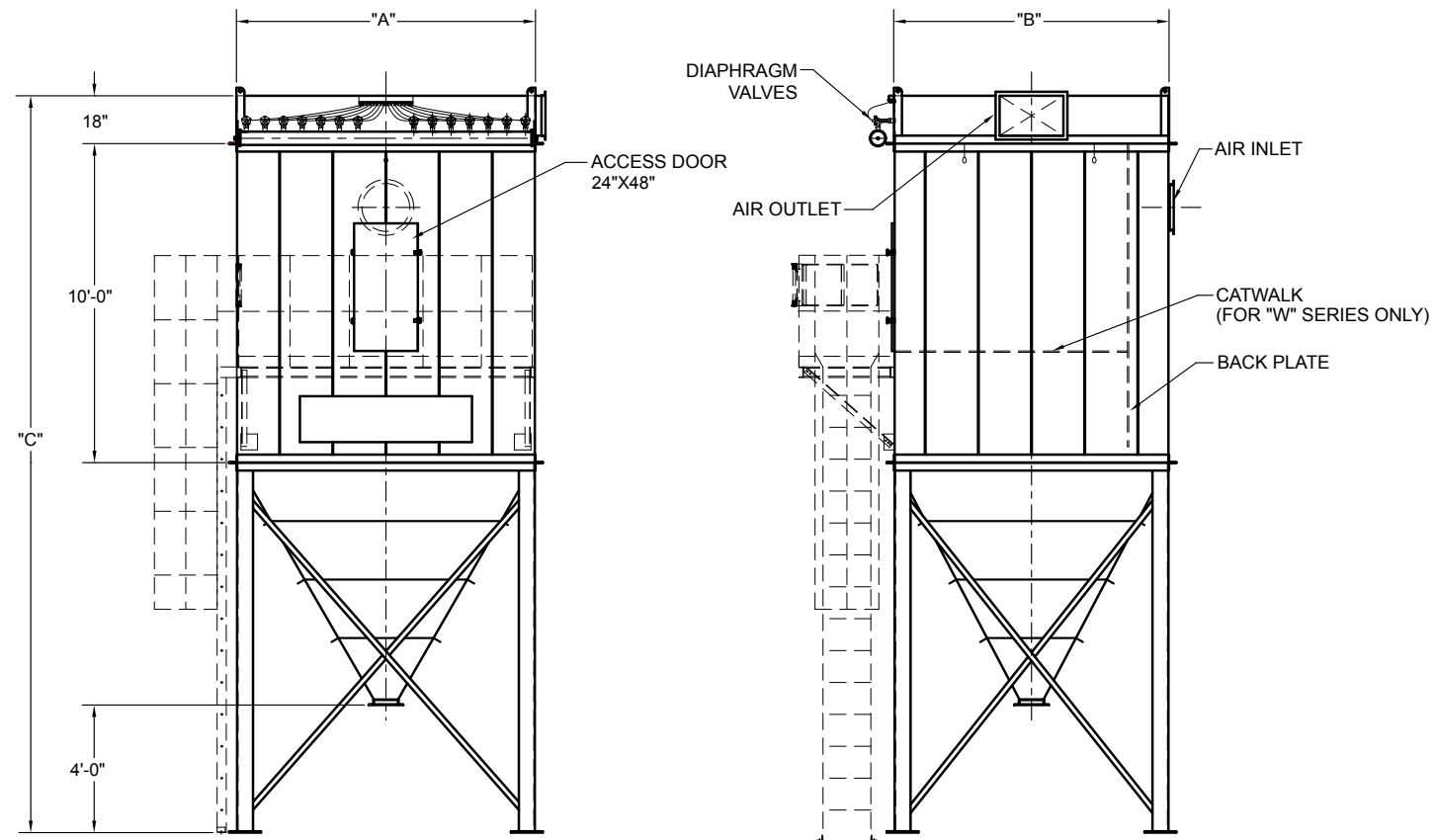
**TRP model: clean side access with plenum**

Identical to the above model (TR) except that it has a plenum enabling the operator to go inside the clean section. This protects the operator from bad weather during maintenance.



# SPECIFICATIONS

# - INSIDE ACCESS -



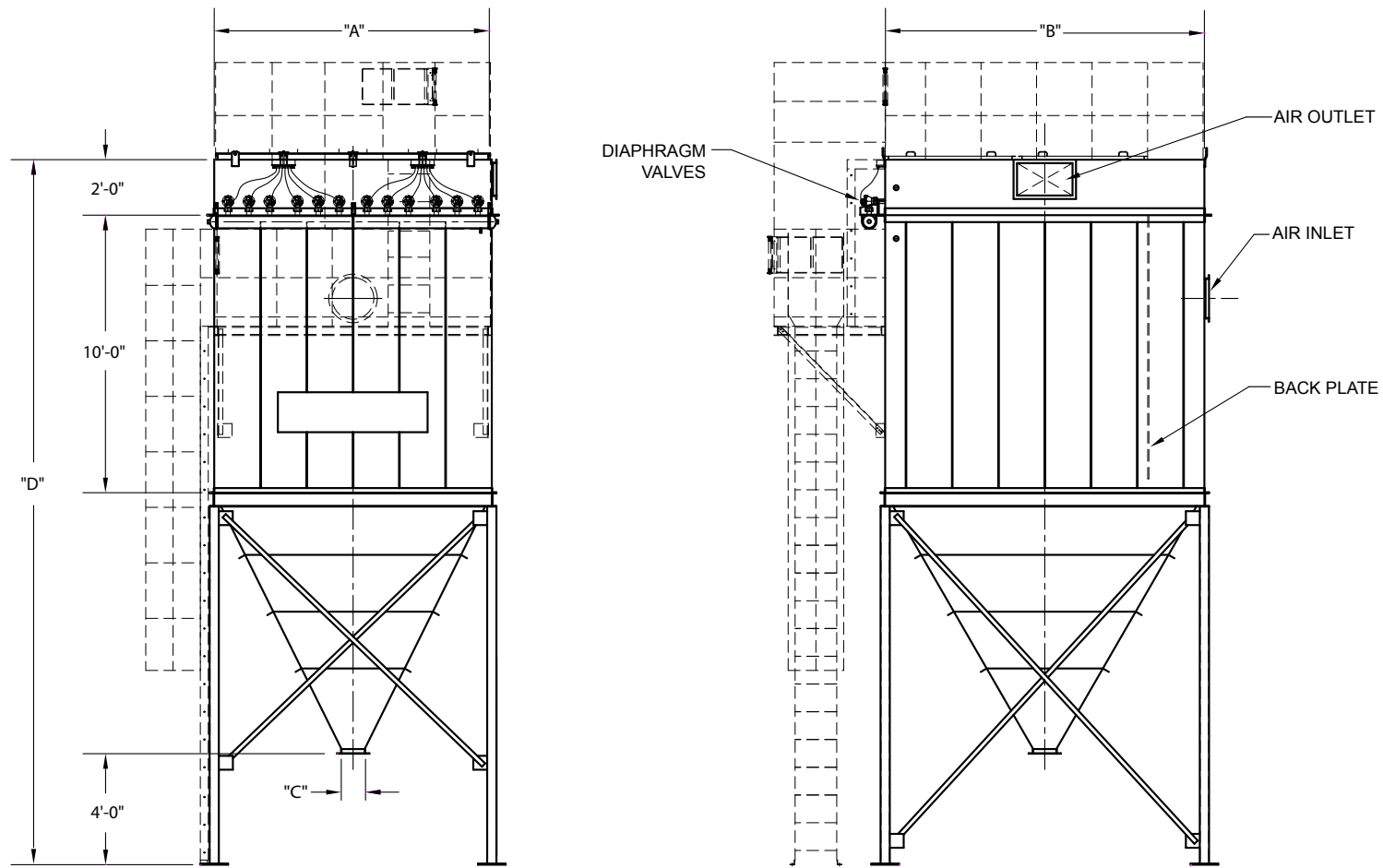
MODEL	CLOTH AREA (ft <sup>2</sup> )		A	B	C		WEIGHT (LBS)	NUMBER AND SIZE OF VALVE
	BAGS 8'-0"	BAGS 10'-0"			BAGS 8'-0"	BAGS 10'-0"		
16S	160	200	28"	34"	162"	186"	1,050	4 @ 3/4"
24S	240	300	28"	48"	185"	199"	1,350	4 @ 3/4"
24W	240	300	42"	52"	178"	202"	1,600	4 @ 3/4"
36S	360	450	42"	52"	178"	202"	1,750	6 @ 3/4"
36W	360	450	56"	52"	182"	202"	2,100	6 @ 3/4"
48S	480	600	42"	66"	190"	214"	2,150	6 @ 3/4"
48W	480	600	56"	66"	190"	214"	2,700	6 @ 3/4"
64S	640	800	56"	68"	192"	216"	2,500	8 @ 3/4"
64W	640	800	70"	68"	194"	218"	3,600	8 @ 3/4"
80S	800	1,000	56"	82"	204"	228"	3,350	8 @ 3/4"
80W	800	1,000	70"	82"	204"	228"	4,200	8 @ 3/4"
100S	1,000	1,250	70"	82"	204"	228"	3,650	10 @ 3/4"
100W	1,000	1,250	84"	82"	206"	230"	4,500	10 @ 3/4"
120S	1,200	1,500	70"	96"	216"	240"	4,500	10 @ 1"
120W	1,200	1,500	84"	96"	216"	240"	4,750	10 @ 1"
144S	1,440	1,800	84"	96"	216"	240"	5,700	12 @ 1"
144W	1,440	1,800	98"	96"	218"	242"	6,600	12 @ 1"
168S	1,680	2,100	98"	96"	218"	242"	6,900	14 @ 1"
168W	1,680	2,100	112"	96"	230"	254"	7,800	14 @ 1"
192W	1,920	2,400	126"	96"	242"	266"	8,900	16 @ 1"
216W	2,160	2,700	154"	102"	215"	239"	9,000	18 @ 1"
240W	2,400	3,000	168"	102"	215"	239"	9,500	20 @ 1"
264W	2,640	3,300	182"	102"	215"	239"	10,100	22 @ 1"
288W	2,880	3,600	196"	102"	215"	239"	12,000	24 @ 1"
312W	3,120	3,900	210"	102"	218"	242"	14,000	26 @ 1"
336W	3,360	4,200	224"	102"	224"	248"	15,000	28 @ 1"
360W	3,600	4,500	238"	102"	230"	254"	17,000	30 @ 1"
384W	3,840	4,800	252"	102"	236"	260"	18,700	32 @ 1"
408W	4,080	5,100	266"	102"	242"	266"	19,950	34 @ 1"
432W	3,420	5,400	280"	102"	248"	272"	21,000	36 @ 1"





# SPECIFICATIONS

# - TOP ACCESS -



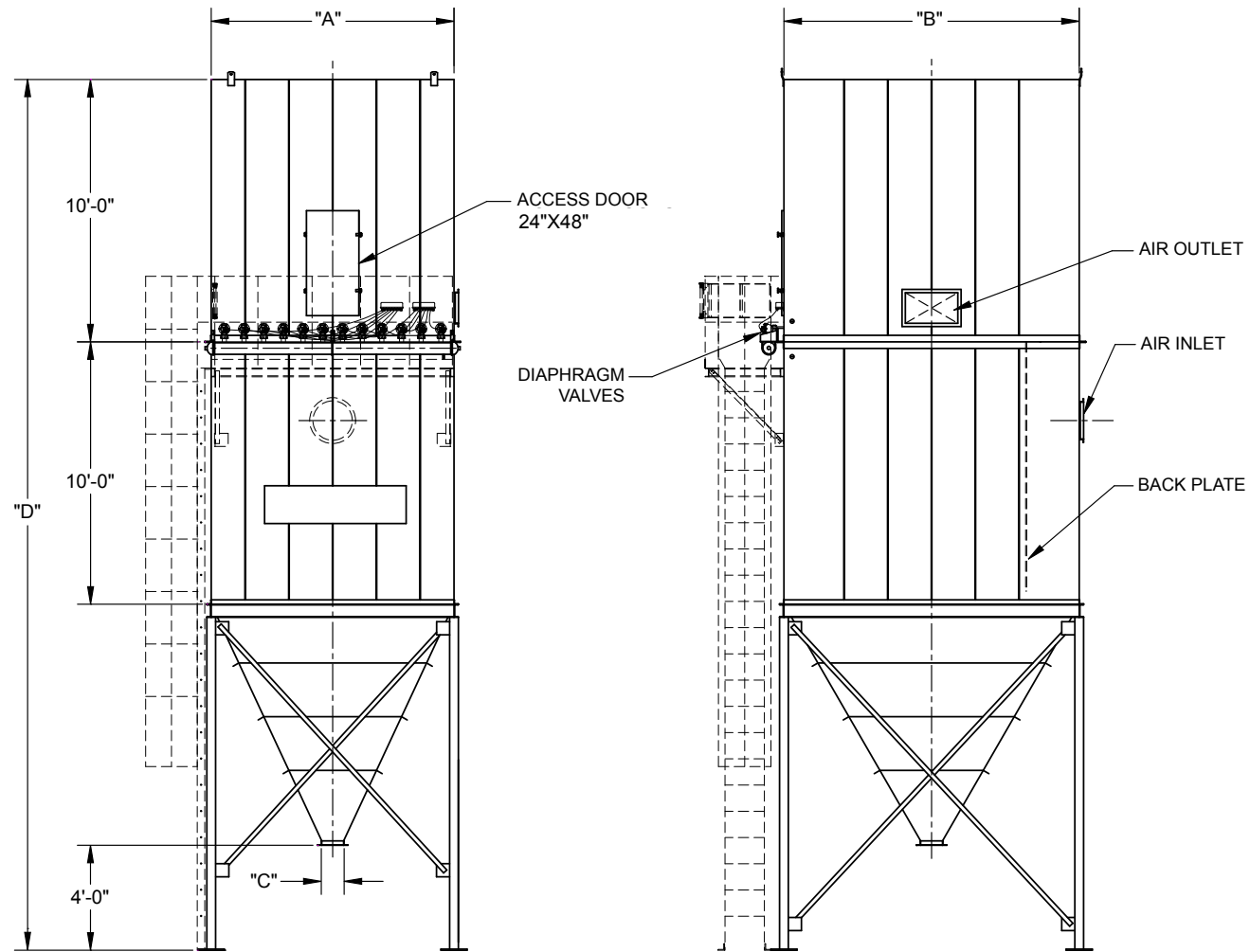
MODEL	CLOTH AREA (ft <sup>2</sup> )	A	B	C	D	WEIGHT (LBS)	NUMBER AND SIZE OF VALVE
54-10TR-6	848	60"	101"	10"	249"	4,931	6 @ 1 1/2"
72-10TR-6	1,131	60"	131"	10"	274"	6,180	6 @ 1 1/2"
81-10TR-6	1,273	90"	101"	10"	249"	6,300	9 @ 1 1/2"
108-10TR-6	1,697	90"	138"	10"	286"	7,621	9 @ 1 1/2"
144-10TR-6	2,262	120"	138"	10"	281"	9,072	12 @ 1 1/2"
180-10TR-6	2,828	150"	138"	22"	281"	10,355	15 @ 1 1/2"
216-10TR-6	3,393	180"	138"	52"	281"	11,647	18 @ 1 1/2"
252-10TR-6	3,959	210"	138"	82"	281"	12,939	21 @ 1 1/2"
288-10TR-6	4,524	240"	138"	112"	281"	14,244	24 @ 1 1/2"
324-10TR-6	5,090	270"	138"	142"	281"	15,927	27 @ 1 1/2"
360-10TR-6	5,656	300"	138"	172"	281"	17,207	30 @ 1 1/2"
396-10TR-6	6,221	330"	138"	202"	281"	18,511	33 @ 1 1/2"
432-10TR-6	6,787	360"	138"	230"	281"	19,802	36 @ 1 1/2"
468-10TR-6	7,352	390"	138"	262"	281"	21,096	39 @ 1 1/2"
504-10TR-6	7,918	420"	138"	292"	281"	22,413	42 @ 1 1/2"
540-10TR-6	8,483	450"	138"	322"	281"	23,706	45 @ 1 1/2"
576-10TR-6	9,049	480"	138"	352"	281"	24,998	48 @ 1 1/2"
612-10TR-6	9,615	510"	138"	382"	281"	26,693	51 @ 1 1/2"
648-10TR-6	10,180	540"	138"	412"	281"	27,960	54 @ 1 1/2"
684-10TR-6	10,746	570"	138"	442"	281"	29,265	57 @ 1 1/2"
720-10TR-6	11,311	600"	138"	472"	281"	30,570	60 @ 1 1/2"





# SPECIFICATIONS

# - TOP ACCESS WITH PLENUM -



MODEL	CLOTH AREA (ft <sup>2</sup> )	A	B	C	D	WEIGHT (LBS)	NUMBER AND SIZE OF VALVE
54-10TRP-6	848	57"	101"	10"	345"	6,499	6 @ 1 1/2"
72-10TRP-6	1,131	57"	128"	10"	368"	8,045	6 @ 1 1/2"
81-10TRP-6	1,273	90"	101"	10"	345"	8,892	9 @ 1 1/2"
108-10TRP-6	1,697	84"	135"	10"	386"	9,906	9 @ 1 1/2"
144-10TRP-6	2,262	114"	135"	10"	374"	11,554	12 @ 1 1/2"
180-10TRP-6	2,828	138"	135"	13"	374"	13,116	15 @ 1 1/2"
216-10TRP-6	3,393	165"	135"	40"	374"	14,687	18 @ 1 1/2"
252-10TRP-6	3,959	192"	135"	67"	374"	16,258	21 @ 1 1/2"
288-10TRP-6	4,524	219"	135"	94"	374"	17,842	24 @ 1 1/2"
324-10TRP-6	5,090	246"	135"	120"	374"	19,804	27 @ 1 1/2"
360-10TRP-6	5,656	273"	135"	148"	374"	21,363	30 @ 1 1/2"
396-10TRP-6	6,221	300"	135"	186"	374"	22,946	33 @ 1 1/2"
432-10TRP-6	6,787	327"	135"	202"	374"	24,516	36 @ 1 1/2"
468-10TRP-6	7,352	354"	135"	229"	374"	26,088	39 @ 1 1/2"
504-10TRP-6	7,918	381"	135"	256"	374"	27,685	42 @ 1 1/2"
540-10TRP-6	8,483	408"	135"	283"	374"	29,256	45 @ 1 1/2"
576-10TRP-6	9,049	435"	135"	310"	374"	30,827	48 @ 1 1/2"
612-10TRP-6	9,615	462"	135"	336"	374"	32,807	51 @ 1 1/2"
648-10TRP-6	10,180	489"	135"	364"	374"	34,347	54 @ 1 1/2"
684-10TRP-6	10,746	516"	135"	390"	374"	35,931	57 @ 1 1/2"
720-10TRP-6	11,311	543"	135"	418"	374"	37,515	60 @ 1 1/2"

